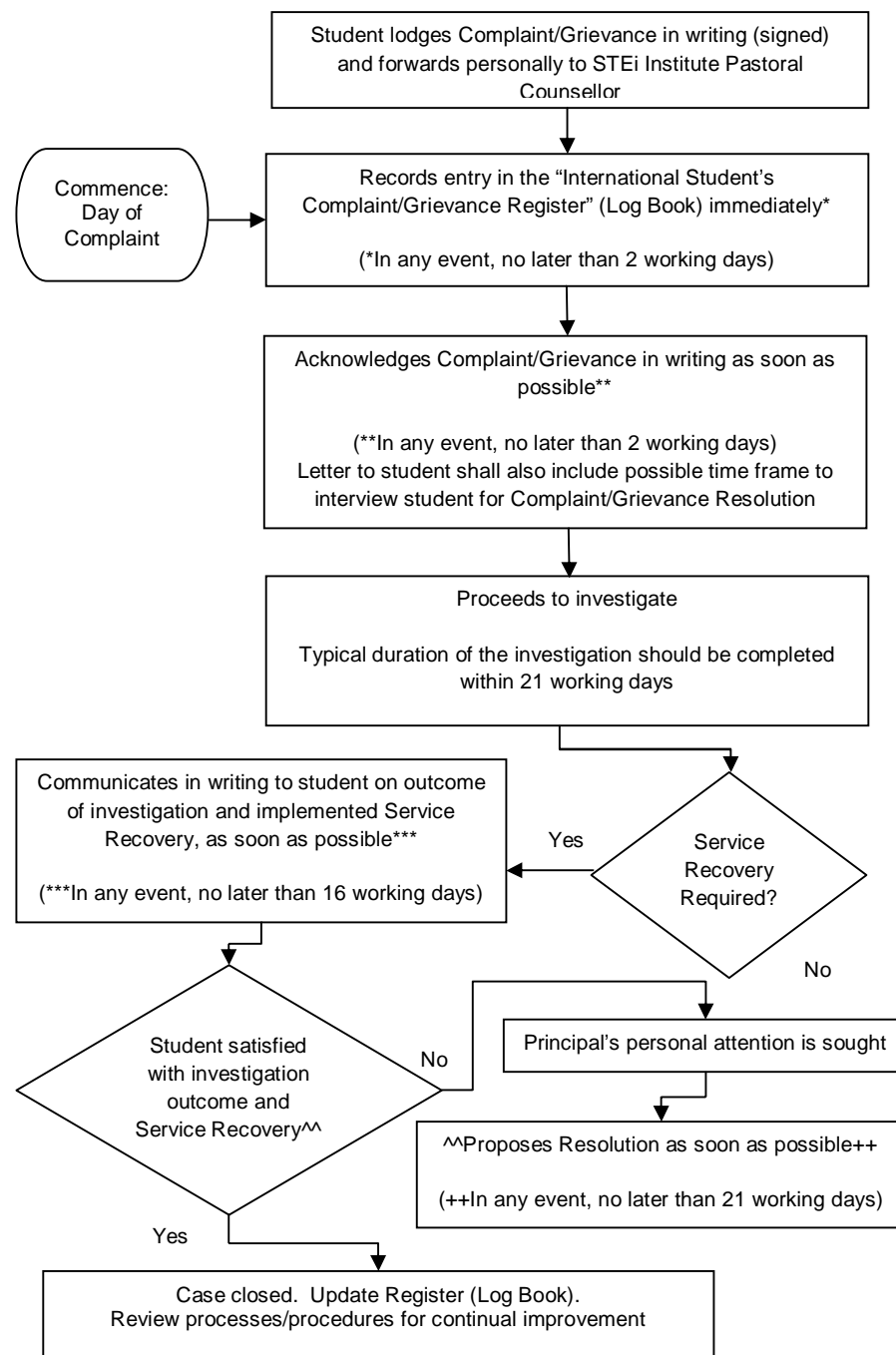


STUDENT COMPLAINT/ GRIEVANCE PROCEDURE FLOWCHART



Important Note: ^^ In instances where the student is still not satisfied with STEi Institute Principal's Proposed Resolution, the student (and/ or STEi Institute) has the option open to refer the Complaints/ Grievances to The Council for Private Education (CPE)

STUDENT COMPLAINTS RAISED TO CPE FLOWCHART

